



Feel the difference



Ford Chassis Cabs

Ford Commercial Vehicles

Published by Commercial Vehicle Marketing,
Ford Motor Company Limited,
Brentwood, Essex, England.
Registered in England No. 235446.
FA 1516
BJN 301546. FoE H35E.
PN 677503/0406/42m/GBR en.
April 2006.
© Ford Motor Company Limited.

www.fordvans.co.uk

Illustrations, descriptions and specifications. This catalogue was correct at the time of going to print. However, Ford policy is one of continuous product development. The right is reserved to change specifications, colours and prices of the models and items illustrated and described in this publication at any time. For the latest details always consult your Ford Transit Specialist Dealer. Optional equipment. Throughout this publication, wherever a feature is described as being an 'Option' or 'Optional Fitment/Pack', etc., you should assume that it will be at extra cost to the base vehicle, unless specifically stated to the contrary. All models and colour combinations are subject to availability.

Note The Bluetooth® word mark and logos are owned by the Bluetooth SIG, Inc. and any use of such marks by Ford Motor Company Limited and its associated companies is under licence. Other trademarks and trade names are those of their respective owners.

Dealer



Transit
Chassis Cab

Create the right impression

The first rule in business is to create the right impression. And there's no better way to do that than to arrive in style. So the new Ford Transit Chassis Cab range represents some of the best looking and most adaptable vehicles available. No matter which model you choose, you can be sure that they each share the same tough credentials and work-hungry attitude. And provide a solid, versatile platform for all types of bespoke bodywork. Because you only get one chance to make a great first impression.

For more information, please visit: www.fordvans.co.uk/chassiscabs

4	Introduction	18	Introduction
6	Comfort and control	20	1-way Tipper
8	Mobile office	22	Dropside
10	Power you can count on	24	Box Van
12	Solid foundation	26	Safety
13	Chassis features	27	Security
14	Model choice	28	Services
		29	Finance
		30	Body colours
			Special Vehicle Options (SVO)



Model Transit One-Stop Double Cab LWB Tipper, Transit One-Stop Single Cab MWB Tipper **Options** (at extra cost) Front fog lights (Double Cab), Tonic metallic paint (Single Cab) **Accessories** (at extra cost)

Note Some images portrayed are of a pre-production model and/or are computer generated, therefore, the design/features on the final version of the vehicle may differ in various respects. In addition, some of the features shown on the vehicles may be optional.



Introducing the new Ford Transit. The best idea, made better.

Europe's favourite business partner has raised the bar again. With its fresh and distinctive style, tough dependability, powerful new engines, superb cab environment and outstanding ride and handling, it will create a first rate impression for you and your business.

Impressive!

Comfort and control

The new Ford Transit's superb car-like interior perfectly complements its dynamic exterior style. Its new two-tone instrument panel gives the cab a light and luxurious feel, and is brimming with innovative stowage features. Clear instruments and easy-to-use controls help make your time at the wheel more relaxing and enjoyable, while reinforcing the high level of quality and craftsmanship to be found throughout the entire vehicle.

Standard features include:

- Driver's and passenger's side facia-top stowage compartments with lids
- 12-volt power point on driver's side
- Central storage for A4 binder or clipboard
- Passenger's side open storage bin
- Centre-mounted car park ticket/toll holder
- Facia-mounted swivelling tray with two cup holders and pen slot
- Glovebox with rails designed to take A4 hanging files
- Two 2-litre bottle holders
- Driver's-side door pocket
- 6000 RDS stereo radio/CD

KEY BENEFITS

Cab

- Two-door configuration for Single Cab; four-door (glazed) configuration for Double Cab (non-glazed crew doors optional)
- Glazed rear window standard

Seating

- Single Cab with standard dual passenger seat (single passenger seat option)
- Double Cab with a 3-seat bench or optional 4-seat bench seat with underseat storage
- Six-way adjustable driver's seat with integral armrest
- New Tomy seat fabric
- Adjustable head restraints
- Integral door armrest
- Three-point inertia reel seat belts (4-seat bench seat cap only to centre seats)

Instruments and controls

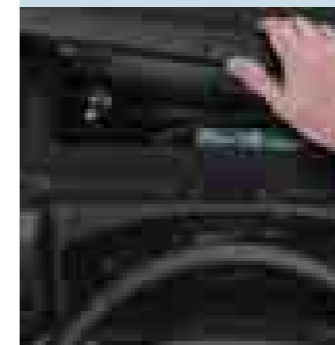
- Stylish, two-tone instrument panel provides light and airy feel
- Four-spoke steering wheel
- Facia-mounted gear lever for smooth, car-like gear shifting
- Innovative storage features
- Clear, easy-to-read instruments
- Ergonomically-designed controls



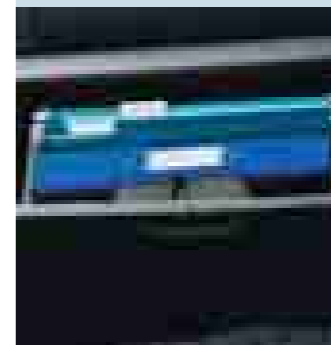
The new waterproof key fob incorporates an innovative self-charging feature, so it's always ready for use.



Lidded facia-top stowage includes a 12-volt power socket for charging mobile phones or other small electrical accessories.



Large glovebox is fitted with rails to hold A4 hanging files.



Every new Ford Transit is equipped with a supportive six-way adjustable driver's seat.



The new Ford Transit offers a choice of seating combinations with a single driver's seat and dual passenger seat fitted as standard.



Should you prefer, two single front seats are also available. (Option)



Take a seat in the new Ford Transit and you will soon understand that this is far more than just a cab. It also serves as a mobile office, providing you with somewhere spacious and comfortable from which to manage your working day.

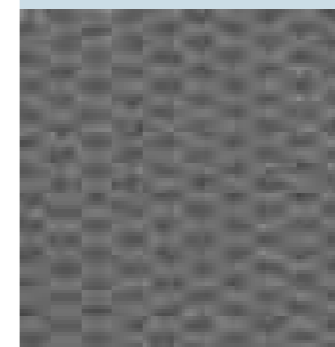
The instrument panel contains two large lidded stowage compartments, the one in front of the driver containing a handy 12-volt power point. A useful facia-top storage area is ideal for a ring-binder or clipboard and, above it, there's an

innovative folding work surface, complete with twin cup holders. In a first for its class, the deep and roomy glovebox is fitted with rails to take A4 hanging files.

An integrated front step makes cleaning the windscreen easier.



Durable York Weave vinyl trim. (Option on selected models)



Mobile office

When it comes to quality and style, the new Ford Transit is second to none. The visual impression it makes is backed up by its range of available equipment. Highlights of this innovative, yet proven technology include air conditioning and cruise control. Bluetooth® wireless connectivity is available, offering voice control for the audio system and the majority of Bluetooth® compatible mobile phones. There's also the option of satellite navigation, plus a series of special option packs, each designed to meet a specific business need.

Optional features include:

- Air conditioning
- Cruise control and leather-trimmed steering wheel
- Bluetooth® wireless connectivity
- CD6
- TravelPilot EX satellite navigation system with stereo radio/single CD player and MP3 capability
- Visibility Pack
- Power Pack

Note The Bluetooth® word mark and logos are owned by the Bluetooth SIG, Inc. and any use of such marks by Ford Motor Company Limited and its associated companies is under licence. Other trademarks and trade names are those of their respective owners.

Vehicle shown features optional equipment, at extra cost.

Latest digital tachograph sets new standards for performance, technology, design and tamper proofing.



Choose from three phone installations: conventional hands-free kit or two Bluetooth® based wireless systems with or without phone cradle.



New Ford Transit's auto headlights switch on automatically when light levels begin to drop. (Part of Visibility Pack)



Visibility Pack

The optional Ford Transit Visibility Pack comprises a range of thoughtful features, including:

- Tinted glass
- Rain-sensing wipers
- Auto headlights
- 'Quickclear' heated front windscreen
- 'Screen wash drip' feature

Power Pack

Includes Visibility Pack Plus:

- Power-operated front windows
- Power-operated and heated exterior mirrors
- Remote steering column-mounted audio controls



Power you can count on

The new Ford Transit has one of the most extensive powertrain choices available. With a new range of common-rail Duratorq TDCi diesel and Duratec petrol engines delivering more torque and power – up to 375 Nm/140 PS – with lower fuel consumption, a choice of front- or rear-wheel drive, and the availability of a slick-shifting six-speed manual transmission, the new Ford Transit is the power behind your working day.

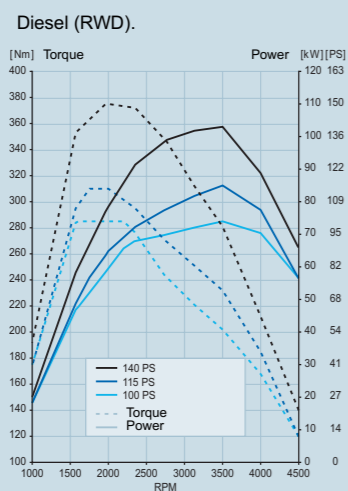
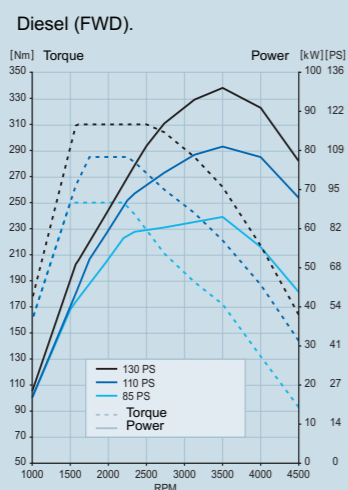
Power and torque that delivers

The new Ford Transit's advanced engine range is characterised by higher power, lower fuel consumption and greater torque. Performance feel is particularly improved when starting from rest, where the significant increases in torque can immediately be felt. These superb torque characteristics mean that the engine reacts instantaneously to the driver's input, delivering responsive performance from rest, on inclines or at speed, with fewer gear changes required, even when heavily laden.

Pulling power

For some operators, towing is an everyday way of life; for others, it is an occasional event. With up to 375 Nm of torque available, and maximum Gross Train Mass (GTM) ranging from 3500 kg to 6500 kg*, the new Ford Transit is thoughtfully designed to cope with whatever demands you make.

*Depending on engine, transmission and final drive ratio.



Rear-wheel drive Ford Transits are powered by a longitudinally-mounted 2.4 Duratorq TDCi diesel engine (above). Front-wheel drive models feature the new transversely-mounted 2.2 Duratorq TDCi diesel engine (left).

Our line-up of Duratorq TDCi diesel engines uses advanced design and technology to boost performance and efficiency. The latest common-rail fuel-injection system helps shape a hard-working combination of horsepower and torque for superior load carrying and towing capability.

Choose your engine from:

Diesel (RWD)

New 2.4 Duratorq TDCi engine, available in three power and torque configurations:

- 100 PS/285 Nm
- 115 PS/310 Nm
- 140 PS/375 Nm

Diesel (FWD)

New 2.2 Duratorq TDCi engine, available in three power and torque configurations:

- 85 PS/250 Nm
- 110 PS/285 Nm
- 130 PS/310 Nm

Transmissions

RWD

- Durashift 5-speed manual transmission (100 PS TDCi)
- Durashift 6-speed manual transmission (115 PS TDCi/140 PS TDCi diesel)

FWD

- Durashift 5-speed manual transmission

Cleaner-air engines

All engines comply with Stage IV emissions legislation. Stage IV is the latest legal requirement needing 50% reductions in oxides of nitrogen (NOx) and 40% reductions in particulates below previous Stage III levels.

Energy management

All FWD and RWD Chassis Cabs are equipped with twin batteries as standard. This arrangement allows the second battery to power whatever accessory is needed when the engine is switched off, leaving the primary battery in a high state of charge for dependable start and run operation.



KEY BENEFITS

Why rear-wheel drive?

- Versatile and traditional choice for Chassis Cabs
- Best suited for heavier payload requirements
- Best payload latitude – the ability to cope with variable payload positions
- Ideally suited for towing applications
- Dual rear wheels are standard on all 3.5T GVM Chassis Cabs for improved traction and rear axle capacity

Why front-wheel drive?

- Lower kerb weight, improved payload
- Lower frame height

Solid foundation

Engineered from the ground up to get the job done, the Ford Transit Chassis Cab range offers the widest possible choice in terms of load length, payload and passenger carrying ability. Choose from three wheelbases, four frame lengths, rear- or front-wheel drive, high-traction dual or single rear wheels (depending on model) and a single or double cab style.



Models SWB Chassis Cab (top), LWB EF Chassis Double Cab with dual rear wheels
Options (at extra cost) Accessories (at extra cost)

Chassis features

Since its launch, the Ford Transit has been the platform of choice for chassis cab conversions. Throughout the entire design process, Ford has worked closely with the bodybuilding industry to ensure that all standard body types, and the majority of specialist conversions, can be fitted easily and efficiently, with little or no modification required.

Each derivative has a strong, robust ladder-frame chassis that provides a flat, strong base on which to build, with integral body mounting points and low frame rails. From a standard box van, dropside or tipper to a refrigerated van, mobile workshop or emergency service vehicle, the new Ford Transit forms a tough and dependable foundation for your business.

Chassis

- Flat, straight top of frame
- Three gross vehicle weights: 3000 kg, 3500 kg and 4250 kg
- Wheelbase and overhang dimensions suitable for industry-standard body sizes: 2.8, 3.2, 3.65 and 4.0 m
- Designed to accommodate non-standard body sizes, either larger or smaller than nominal industry-standard
- Body widths up to 2.05m (300) 2.2m (all 350 and 430 models), 2.3m with optional SVO 2.3m body width pack
- Robust inverted closed 'top hat' section pressed high tensile steel frame (double 'top hat' for 4250 kg models)
- Integral body mounting points, and bolt-on saddle brackets for 4250 kg models
- Flat vertical back of cab
- Removable rear closing member and rear lights, catering for different rear overhangs
- Easily fitted bolt-on rear frame overhangs, where required
- High centre of gravity suspension as standard to cope with large bodywork

Rear-wheel configuration

Dual or single rear wheels are available to ensure the new Ford Transit Chassis Cab matches your operational and bodywork needs exactly.

- Dual rear wheels – Standard on all 3.5T and 4.25T models. Provides increased rear axle capacity and loading latitude. Best all-round combination, but ideally suited to high payload/high traction requirements. Available only with rear-wheel drive
- Single rear wheels – Optional on rear-wheel drive 3.5T models, and standard on all front-wheel drive models. Ideally suited to narrow bodywork where vehicles are used in confined metropolitan, rural or urban environments. Available with both front- and rear-wheel drive. Further benefits include reduced fuel consumption*, especially when combined with front-wheel drive

*Ford homologation figures.

KEY BENEFITS

- Choice of three wheelbase and four frame lengths
- Offers maximum payload and body versatility
- Robust, flat top ladder-frame chassis with integral body mounting points for ease of body fitment
- Suitable for wide range of bespoke bodywork conversions

Rear anti-roll bar is standard on all dual rear-wheel Chassis Cab derivatives.



Detachable rear member simplifies bodybuilding applications.



Model choice

300S Chassis Cab

3137 mm short wheelbase
2.85 metre/9 ft 4 in nominal internal body length
3.0 tonne GVM

- Front-wheel drive
- Single rear wheels
- 1531 kg gross payload
- 3000 kg gross vehicle mass (GVM)
- 3500 kg maximum gross train mass (GTM)
- Turning circle (kerb to kerb) 11.4 m



350M/430M Chassis Cab

3504 mm medium wheelbase
3.2 metre/10 ft 6 in nominal internal body length
3.5 tonne, SVO HD 3.5 tonne and 4.25 tonne GVM

- Rear-wheel drive with dual rear wheels (single rear wheels optional – 350 only)
- Front-wheel drive with single rear wheels (350 only)
- 6500 kg maximum gross train mass (GTM), depending on engine/driveline combination
- 1872 kg gross payload (DRW) – 350M RWD
- 1970 kg gross payload – 350M FWD
- 2594 kg gross payload – 430M
- Turning circle (kerb to kerb) 12.5 m



Body length (mm) Nominal internal length	Chassis dimensions (mm) Overall length	Overall width with door mirrors	Overall height (unladen)	Chassis frame height* (unladen)	Frame length
2850 mm (9ft 4in)	5214	2360	2020	718	2775

Imperial dimensions rounded down to the nearest whole inch.
Nominal body length – Recommended for best overall weight distribution and payload latitude. Nominal length bodies are also recommended when tail-lifts, rear-mounted cranes, towbars or rear-mounted equipment fitted. Nominal lengths assume a typical back of cab to internal face of body bulkhead dimension of 100mm.
SRW = Single Rear Wheels. **DRW** = Dual Rear Wheels. **FWD** = Front-wheel drive. **RWD** = Rear-wheel drive.
***All bodywork and equipment must be fitted in accordance with the Transit Body and Equipment Mounting Manual.**
 * Height dimensions are approximate and will vary dependent upon tyre and suspension specification.

Body length (mm) Nominal internal length	Chassis dimensions (mm) Overall length	Overall width with door mirrors	Overall height* (unladen)	Chassis frame height* (unladen) FWD	Chassis frame height* (unladen) RWD	Frame length
3200 (10ft 6in)	5581	2492	2020-2030	725	787	3142

Imperial dimensions rounded down to the nearest whole inch.
Nominal body length – Recommended for best overall weight distribution and payload latitude. Nominal length bodies are also recommended when tail-lifts, rear-mounted cranes, towbars or rear-mounted equipment fitted. Nominal lengths assume a typical back of cab to internal face of body bulkhead dimension of 100mm.
SRW = Single Rear Wheels. **DRW** = Dual Rear Wheels. **FWD** = Front-wheel drive. **RWD** = Rear-wheel drive.
***All bodywork and equipment must be fitted in accordance with the Transit Body and Equipment Mounting Manual.**
 * Height dimensions are approximate and will vary dependent upon tyre and suspension specification.

350L Chassis Cab

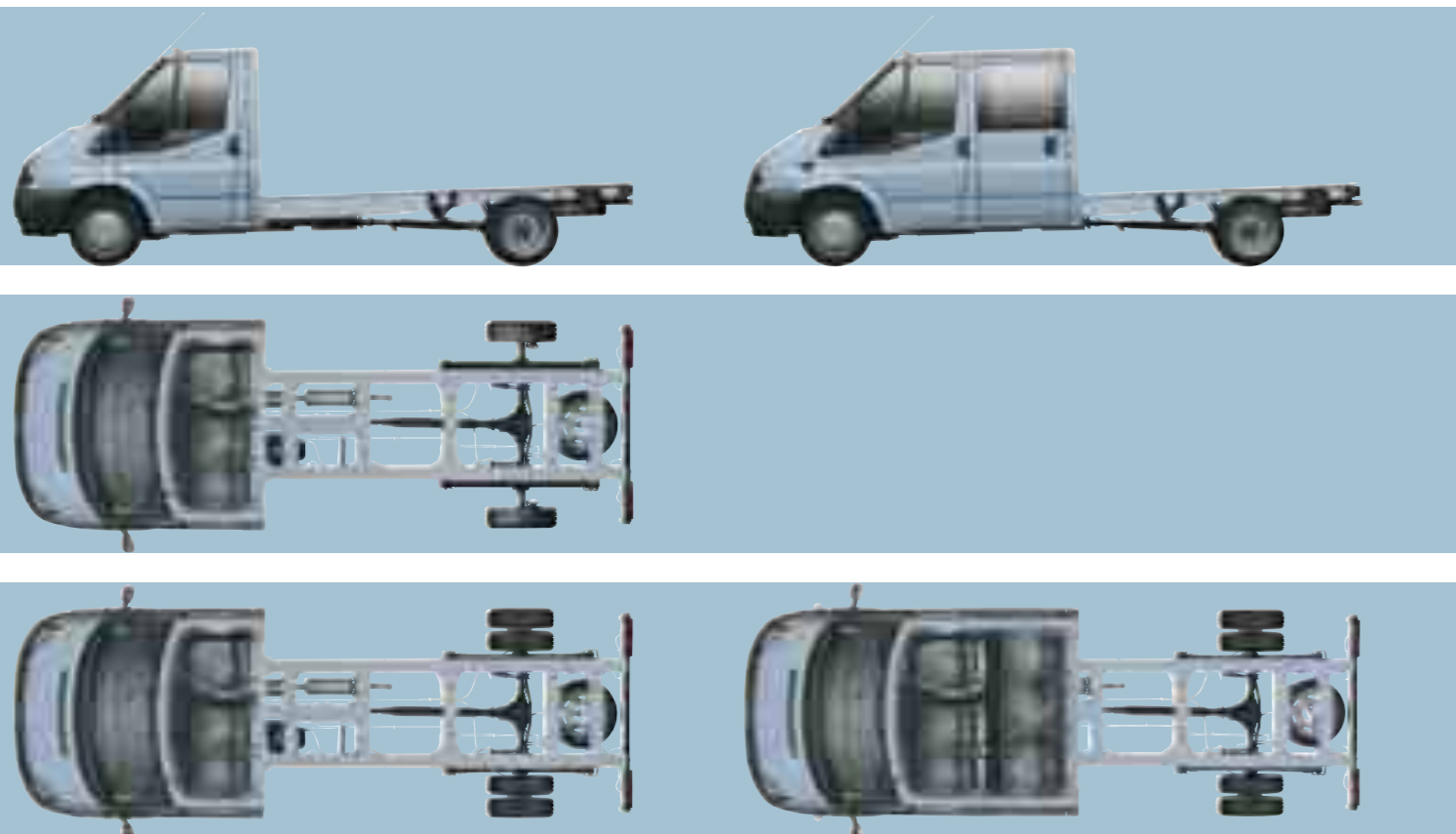
3954 mm long wheelbase
3.66 metre/12 ft nominal internal body length
3.5 tonne GVM

- Rear-wheel drive with dual rear wheels (single rear wheels optional – 350 only)
- Front-wheel drive with single rear wheels
- 6500 kg maximum gross train mass (GTM), depending on engine/driveline combination
- 1770 kg gross payload (DRW) – 350 RWD
- 1873 kg gross payload – 350 FWD
- 2491 kg gross payload – 430
- Turning circle (kerb to kerb) 13.9 m

350/430L Chassis Double Cab

3954 mm long wheelbase
2.85 metre/9 ft 4 in nominal internal body length
3.5 tonne GVM

- Rear-wheel drive with dual rear wheels
- 6500 kg maximum gross train mass (GTM), depending on engine/driveline combination
- 1650 kg gross payload – 350 DRW
- 2372 kg gross payload – 430
- Turning circle (kerb to kerb) 13.9 m



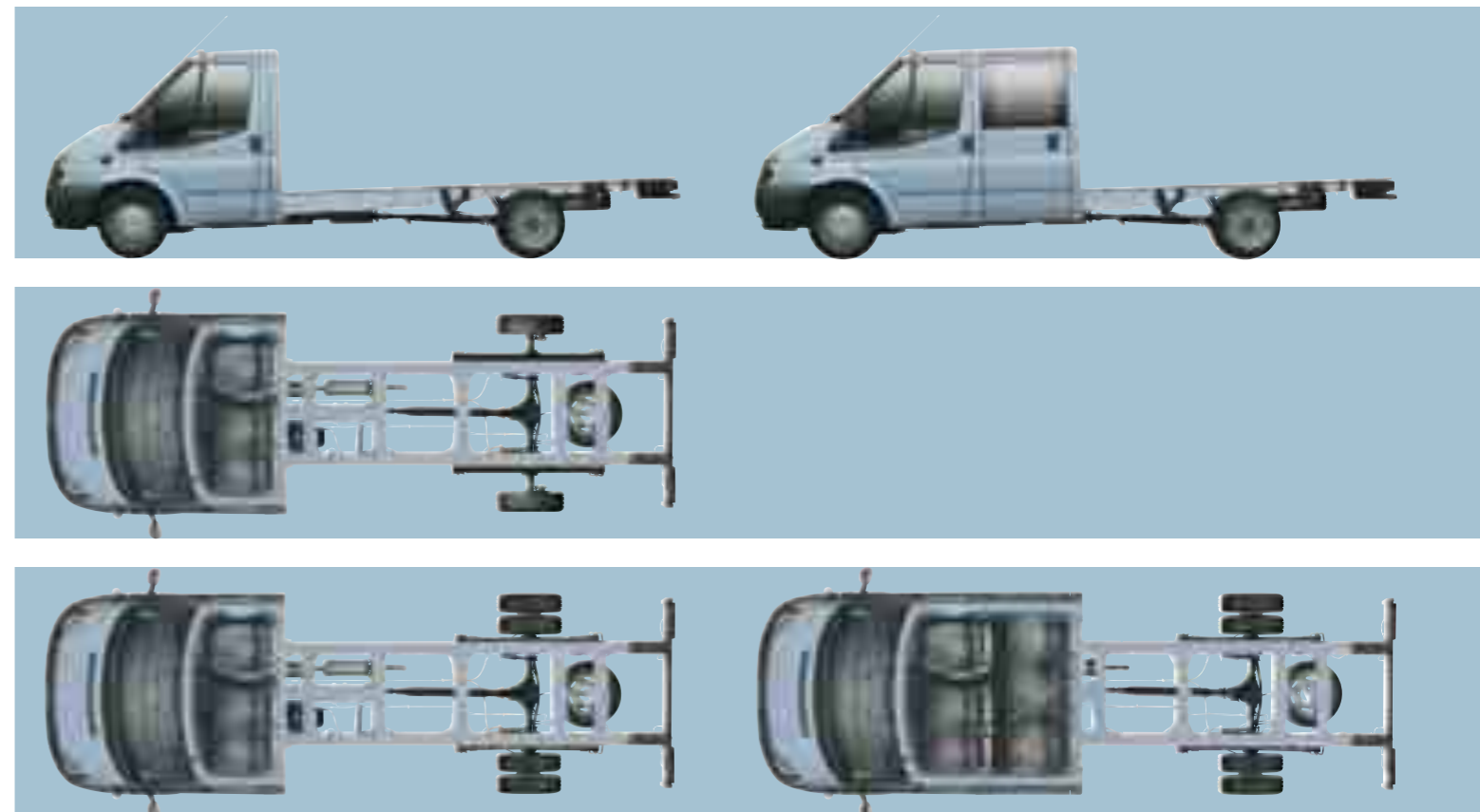
Body length (mm) Nominal internal length	Chassis dimensions (mm)		Overall height*(unladen)	Chassis frame height* (unladen) FWD	Chassis frame height* (unladen) RWD	Frame length
	Overall length	Overall width with door mirrors				
3660 (12ft 0in)	6031	2492	2020 - 2030	725	787	3592
2850 (9ft 4in)	6031	2374/2492	2025	780		2775

Imperial dimensions rounded down to the nearest whole inch.
Nominal body length – Recommended for best overall weight distribution and payload latitude. Nominal length bodies are also recommended when tail-lifts, rear-mounted cranes, towbars or rear-mounted equipment fitted. Nominal lengths assume a typical back of cab to internal face of body bulkhead dimension of 100mm.
SRW = Single Rear Wheels. **DRW** = Dual Rear Wheels. **FWD** = Front-wheel drive. **RWD** = Rear-wheel drive.
 * All bodywork and equipment must be fitted in accordance with the Transit Body and Equipment Mounting Manual. † For longer body lengths use EF (extended frame model)
 • Height dimensions are approximate and will vary dependent upon tyre and suspension specification.

350/430EF Chassis Cab

3954 mm long wheelbase extended frame
4.0 metre/13 ft 1 in nominal internal body length
3.5 tonne, SVO HD 3.5 tonne and 4.25 tonne GVM

- Rear-wheel drive with dual rear wheels (single rear wheels optional – 350 only)
- Front-wheel drive with single rear wheels
- 6500 kg maximum gross train mass (GTM), depending on engine/driveline combination
- 1753 kg gross payload – 350 RWD
- 1857 kg gross payload – 350 FWD
- 2474 kg gross payload – 430
- Turning circle (kerb to kerb) 13.9 m



Body length (mm) Nominal internal length	Chassis dimensions (mm)		Overall height* (unladen)	Chassis frame height* (unladen) FWD	Chassis frame height* (unladen) RWD	Frame length
	Overall length	Overall width with door mirrors				
4000 (13ft 1in)	6414	2492	2025-2035	745	745-890	3975
3200 (10ft 6in)	6414	2492	2025	785		3158

Imperial dimensions rounded down to the nearest whole inch.
Nominal body length – Recommended for best overall weight distribution and payload latitude. Nominal length bodies are also recommended when tail-lifts, rear-mounted cranes, towbars or rear-mounted equipment fitted. Nominal lengths assume a typical back of cab to internal face of body bulkhead dimension of 100mm.
SRW = Single Rear Wheels. **DRW** = Dual Rear Wheels. **FWD** = Front-wheel drive. **RWD** = Rear-wheel drive.
 * All bodywork and equipment must be fitted in accordance with the Transit Body and Equipment Mounting Manual.
 • Height dimensions are approximate and will vary dependent upon tyre and suspension specifications.

The new Ford Transit is renowned for its versatility and flexibility, and is the ideal platform for a wide range of specialist applications and bespoke conversions. What's more, for the convenience of those operators who want a quick and simple, work-ready solution, Ford offers the Transit 'One-Stop' range of bodied chassis cabs.



Ford Transit 'One-Stop'

1-way Tipper

Strong, rugged and purposeful, the Ford Transit Tipper represents superb functionality, coupled with quality of design and manufacture. It is seen as a versatile, reliable partner by a wide range of industries where safety and productivity are paramount. The Transit Tipper has been independently certified by the TÜV for safety and production conformity; an industry first ensuring that Transit continues to lead the market.



3.2 m/10 ft 4 in 350M.



2.83 m/9 ft 3 in 350L Double Cab.



Tipper are expected to operate in adverse conditions and subject to a wide range of payloads. So the Transit's dual rear wheel, rear-wheel drive configuration provides excellent traction and loading latitude often required on and off site.

Need a crew of 7 on site, along with tools and raw materials? The Double Cab Tipper provides the quick, flexible solution often required in construction and allied trades.

In addition to the high specification of the 1-way Tipper, a wide range of options is available, including mud and snow tyres, tow bar and special paint colours. Double cab models can also be specified with blanked crew doors and a quad crew seat with useful under-seat stowage.

A wide range of body accessories is offered. Typical features include top and bottom hinged tailboard, wander lead hand controller, polytarps, toolboxes, amber beacons, tow bars with a range of ball or clevis couplings and electrical sockets, chevrons, ply or polypropylene load liners and rear light guards. Together, they enable the vehicle to be tailored in-plant to meet the specific demands of the operator, saving you both time and money.

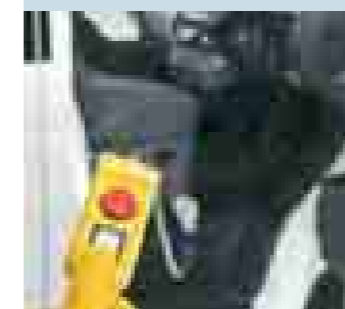
- 1-way tipping capability – rear
- Available on 350 MWB Chassis Cab and 350 LWB Double Cab
- TÜV 98/37/CE safety and production conformity approved



2 kW electro-hydraulic powerpack with position switch control of ram extension.



Wander lead control - pluggable remote control handset for external control of hydraulics.



Pull-up load lash points are integrated into the floor. Additional underfloor and headboard roping points are fitted as standard.



Bottom hinged tailboard.



Dropside

The Ford Transit Dropside is a stylish, easy-to-drive vehicle for operators seeking a cost-effective, yet professional image for their business. With payloads ranging between 1 and 1.5 tonnes, and body lengths from 2.85 metres to 4.05 metres, there is a model to suit most operating needs.



2.85 m/9 ft 4 in 300S.



3.2 m/10 ft 6 in 350M.



3.65 m/12 ft 350L.



4.05 m/13 ft 3 in 350EF.



3.2 m/10 ft 6 in 350EF Double Cab.

Load security is a key consideration for Dropside users, so a generous number of lashing points are provided, whilst a pair of stirrup steps and twin grab handles afford easy access to the load area.

The Dropside's flexibility is further enhanced by its removable side and tailboards, and removable rear corner pillars, which enable awkward loads to be carried. What's more, components that are subjected to heavy wear and tear are designed to be easily repaired or replaced.

To complement the Dropside, a range of accessories is available to ensure more specific requirements are met. Tail-lifts, loader cranes, toolboxes, beacons and bespoke paint schemes can be specified to meet the demands of an increasing variety of operating tasks.

- Replaceable resin-bonded 15 mm ply load deck
- Substantial all-steel powder-coated headboard
- Removable sideboards, tailboard and corner pillars for flatbed operation
- Flush-mounted load-lashing rings to raves, plus roping eyes to underside of raves
- Double skinned body colour aluminium side and tailboards with integral bump rubber
- Robust, lightweight aluminium and steel subframe
- Half round thermoplastic fenders

Stirrup step and grab handle provide quick and easy access to loadspace without the need to lower the body sides.



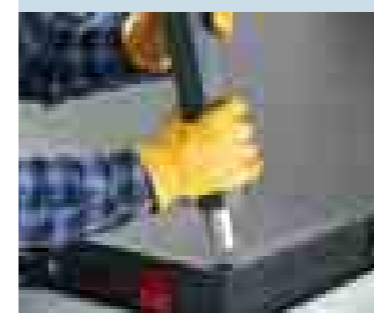
Strong tubular steel headboard provides protection to cab and facilitates longer length loads.



Pull-up load retention rings sit flush with the load platform when not in use.



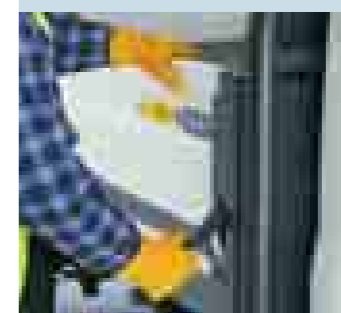
Removable corner pillars enable the Dropside to be converted into a Flatbed when combined with board removal.



Underfloor mounted hooks for securing load sheets.



Easy to operate overcentre cam latches provide secure board retention.



Box Van

Built to take everyday knocks, the ply/grp panelled Box Van features a host of standard and optional equipment providing true flexibility in specification. The standard specification includes a slat shutter rear door, translucent panelled roof, flat resin bonded ply floor, internal light, grab handle and step. The steel rear door frame has been designed for tail-lift installations either optional or retro-fit. For additional storage space an optional Luton head can be specified.



3.6 m/11 ft 9 in 350L.



4.0 m/13 ft 1 in 350EF.



Column tail-lift accessory. Traditional lightweight column lift for use with standard rear shutter.

Weight-efficient aluminium and steel construction ensures that the new Ford Transit Box Van will carry a competitive payload, while a flat load floor means that the loadspace can be used to its maximum potential.

To help restrain the load while on the move, a combination of floor- and side-mounted load-lashing points are provided.

A range of bodywork accessories ensures the specification can be tailored exactly to your requirements. A Luton head takes full advantage of the area above the cab, whilst a cargo net effectively restrains items within the Luton. To gain maximum access to the load area, a cantilever lift provides full aperture access to the load compartment. Alternatively, a conventional lightweight pillar tail-lift will provide convenient access for heavier loads.

With a choice of 100 PS, 115 PS or 140 PS Duratorq TDCi diesel engines, a comfortable cab and a host of convenient features, including an easy-open rear shutter and translucent plastic roof, the new Ford Transit Box Van makes perfect sense all-round.

- 3.6 m and 4.0 m internal body lengths
- 15.5 cu.m and 17.2 cu.m loadspace
- uPVC slat rear shutter with substantial hook lock
- Phenolic resin-bonded plywood floor
- Full-width aluminium rear step
- 400 mm high plywood kick-board
- Internal side wall-mounted load restraint rails
- Body finished in Frozen White only

Load retention net accessory. Prevents loose loads in Luton head from falling into loadspace.



Opaque GRP roof allows daylight in. Wide slat shutter parks parallel with roof to minimise headroom intrusion.



Rear door emergency release. Allows escape from interior if shutter is inadvertently closed from exterior of vehicle.



Luton head accessory. GRP Luton head provides useful additional stowage above cab.



As a business user, you need to have confidence in your vehicle. So the new Ford Transit can take plenty of tough treatment.

Safety

The new Ford Transit's reinforced body structure offers plenty of all-round passive protection. Plus a wealth of sophisticated active safety features too. These include four-wheel disc brakes with ABS (anti-lock brakes) and electronic brake-force distribution to help prevent the rear wheels from locking-up, particularly when driving unladen.

In addition, every new Ford Transit benefits from numerous practical safety features, including three-point seat belts for all seating positions, a driver's airbag, and optional front passenger's airbag*. Visibility is enhanced by large exterior door mirrors with wide angle lenses.



*Note: A rear-facing child seat should never be placed in the front passenger seat when the Ford vehicle is equipped with an operational front passenger's airbag.

Security

With a host of awards to its name, the Ford Transit is consistently recognised by the industry as a class-leader for security. The latest model builds on this reputation to offer a comprehensive portfolio of affordable and proven security technology.

All new Ford Transits come with a Ford Safeguard Passive Anti-Theft System (PATS) engine immobiliser (certified to Thatcham Category 2), high-security shielded locks with strengthened mountings, remote central double locking, lockable fuel filler, visible Vehicle Identification Number (VIN) and VIN-protected audio units.

A Thatcham Category 1 alarm system is also available. The system features an interior scanner and an independent battery back-up, should a thief attempt to disconnect the vehicle battery supply.

The new Ford Transit is also available with a trailer monitoring alarm. The system monitors the trailer coupling and activates the alarm should it detect the unauthorised removal of the trailer.

Additional security features include:

- Unique lock-in-latch door lock system eliminates cables and rods between the lock and the latch
- Central locking with deadlocks, two-stage unlocking, auto relocking, auto locking on drive away and audible mis-lock feedback
- Key-locking bonnet helps to prevent unwanted tampering with the engine compartment
- 'Torque slip' anti-theft steering wheel renders the steering wheel inoperative if excessive force is applied

Security has always been a Ford strong point. And the new Ford Transit range carries on the proud tradition with a state-of-the-art security package.



A key-operated bonnet lock serves as an effective anti-theft deterrent. By eliminating access to the engine compartment via the traditional cab lever and cable, it makes life far more difficult for a potential thief.

Services

The 222 Sales and 245 Aftersales Transit Specialist Dealers across the UK are equipped and trained to meet Commercial Vehicle customer requirements. But now there's a new level of dedication that a select 113 Sales and 95 Aftersales Ford TSDs are committed to provide – the 'Backbone standard'. When a Ford Commercial Vehicle Dealership achieves Backbone status, it's a recognition of their total commitment to delivering dedicated and professional sales and service support that matches the exacting requirements of Commercial Vehicle customers.

Ford Backbone Dealer Customer Commitment

To meet this, Dealers are required to provide dedicated facilities and management responsibility for vehicle sales and meeting the Backbone customer commitments. These include:

Sales

- To employ dedicated and professionally trained Ford Commercial Vehicle sales management and salespersons
- To utilise a defined Commercial Vehicle customer-focused sales process to ensure a quality customer sales experience
- To ensure that vehicles specified are those that best meet particular customer business use requirements
- To display a minimum of seven new Ford Commercial Vehicles, covering the Ford Commercial Vehicle range
- To have a minimum of six Ford Commercial Vehicle demonstrator vehicles, covering the Ford Commercial Vehicle range, available for demonstration to customers
- To provide customer parking facilities for Transit Jumbo-sized Commercial Vehicles

Aftersales

- To employ dedicated and professionally trained Ford Commercial Vehicle service management, service receptionist and technicians
- To have a dedicated Commercial Vehicle workshop of at least four bays, equipped to Ford Backbone standards for specialist tools and diagnostic equipment
- To have vehicle inspection ramps for use with the customer present
- To inspect all vehicles by a qualified Technician before the job is started and agree all work in advance with the customer
- To stock and supply the full range of Transit, Transit Connect and other Ford Commercial Vehicle tyres
- To utilise defined Commercial Vehicle customer handling processes to ensure a quality customer service and repair experience
- To offer Service booking within 24 hours on request
- To have workshops open at least 70 hours per week, including Saturday opening
- To carry out pre-booked routine service or repairs while you wait
- If emergencies arise in normal working hours, to inspect your vehicle within 15 minutes of arrival at the dealership and commence the repair within one hour
- To provide emergency support 24 hours a day
- If your vehicle breaks down at the roadside, to try to repair it at the roadside
- To offer Class 7 and 5 MOTs, with Class 7 carried out in-house
- To provide full support for LPG-fuelled vehicles
- To publish Simple Service Prices and Simple Repair Prices
- To provide customer parking facilities for Transit Jumbo-sized Commercial Vehicles

For more information

To find the location of your nearest Ford Transit Specialist Dealer, simply call the Ford Information Service on 0845 7111 888, or visit the Ford Dealer locator at www.fordvans.co.uk



Finance

Ford not only cares through Dealers, we offer a variety of finance and leasing schemes to suit your purchasing needs. With our wide choice of plans and services no one is more committed to delivering complete motoring confidence and total peace of mind than Ford.

Ford Credit

Purchase Plan

You put down a deposit. You then pay the remainder, plus interest, over an agreed period – at the end of this period, provided there are no outstanding payments, you own the vehicle.

Lease Plan

Your payments cover the use of the vehicle. Once all the payments have been received, you can sell the vehicle as our agent and we will return the sales proceeds (less any monies owed to us) as a rebate of rentals.

Personal Contract Purchase

Personal Contract Purchase is the flexible way to finance your Ford. If you are looking to renew your vehicle more often, this is the ideal plan. At the end of the agreement choose which option suits you best – own the vehicle, return it or choose a new one.

Ford Business Partner Contract Hire*

Ford Business Partner is dedicated to partnering businesses and will work with you to achieve a complete transport solution across the whole Ford range.

Contract hire is the sure way of keeping a full quota of vehicles on the road every day, while keeping budget payments 100% predictable. With a fixed monthly rental, you have total budgetary control.

Ford Insure

Ford Insure offers a wide range of great value products for you and your Ford including Comprehensive Motor Insurance=, Payment Protection Plan* and Guaranteed Asset Protection**. When you purchase a Ford from a Ford Dealer, you will receive 7 days' Driveaway cover*** free when you call Ford Insure for a no-obligation annual quote.

For further details, please contact your local Ford Dealer or www.ford.co.uk

Ford Protect

Every new Ford gets a 3-year/100,000-mile bumper-to-bumper warranty. Upgrades are also available, giving you the option of worry-free motoring for up to 8 years. For terms and conditions, please refer to your Warranty and Service Guide.

Ford Perforation Warranty

All new Ford models are covered by the Ford Perforation Warranty for 8 years* from the date of first registration.

AA Assistance

All Ford Transit and Transit Connect models are supplied with a comprehensive 3 years' Ford Roadside Assistance package.

Additionally, for Ford Transit, if the fault cannot be rectified:

- **Commercial vehicle replacement** – A replacement vehicle will be provided for 24 hours (subject to status), although an exact replacement may not be available
- **Load continuation** – This service provides an additional destination. Your vehicle will be taken to one destination (UK mainland) probably to unload, then to another to be repaired
- **Link and chase** – If your Ford cannot be fixed at the roadside, a Personal Incident Manager will communicate between the driver and load destination to ensure that the needs are fulfilled

Ford Accident Repair Centres

If your Ford is involved in an accident, your Ford Dealer is best placed to return it to its pre-accident condition. Dealerships displaying the Ford Accident Repair Centre sign all meet the rigorous customer service and repair quality standards laid down by Ford, and offer a 3-year workmanship guarantee.

Ford Customer Relationship Centre

In the unlikely event that your Ford Dealer can't help you or you need to speak to Ford directly, the Ford Customer Relationship Centre is just a phone call away. Call local rate **0845 841 1111**.

*Subject to terms and conditions.

KEY BENEFITS

Cost of ownership

Cost of ownership is an important factor when choosing your next commercial vehicle. So you will find that the Ford Commercial Vehicle range has an outstanding reputation for durability and low running costs. With excellent fuel economy, competitive maintenance and insurance costs, and a comprehensive 3-year/100,000-mile warranty, Ford Commercial Vehicles will give your business the edge.

Finance subject to status and conditions, to over 18s only. Guarantees/indemnities may be required. Written quotations available on request: Freeport Ford Credit. Correct at time of going to print. Contact your Dealer for terms and conditions. #Business Partner Contract Hire is provided by Lex Vehicle Leasing Limited, trading as Ford Business Partner, Heathside Park, Heathside Park Road, Stockport, SK3 0RB. =Ford Insure Comprehensive Motor Insurance is underwritten by Norwich Union Insurance Ltd. Registered in England, No 99122. Registered Office: 8 Surrey Street, Norwich NR1 3NG. Member of the General Insurance Standards Council, authorised and regulated by the Financial Services Authority. *The Payment Protection Plan is underwritten by Norwich Union Insurance Ltd and Norwich Union Life & Pensions Limited, Registered in England No. 3253947. Registered Office: 2 Rougier Street, York YO90 1UJ. Member of the Association of British Insurers and authorised and regulated by the Financial Services Authority. Both companies are part of the AVIVA group. Please refer to Payment Protection policy booklet for full details of benefits and exclusions. **Guaranteed Asset Protection is underwritten by Mapfre Asistencia Compania Internacional De Seguros Y Reaseguros SA. 22-26 Prospect Hill, Galway, Republic of Ireland. Registered in Ireland 903874. Authorised and regulated by the Financial Services Authority. ***Excesses apply. Please refer to summary of cover for details. Maximum 5 vehicles. Not available in conjunction with any other promotion. For our joint protection telephone calls may be recorded and/or monitored.

Body colours

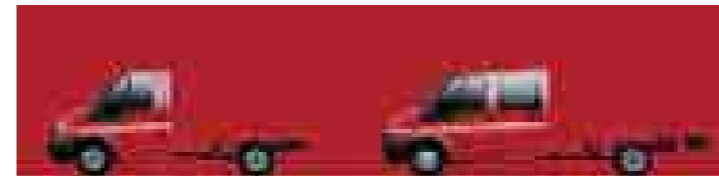
The choice of colour for your Ford Transit Chassis Cab is the key to your company's identity. That's why you will find a full and varied palette of bright and durable environment friendly water-based body colours available.

Trim and body colour availability

Model	Seat trim	Trim colour	Solid Body Colours				Metallic Body Colours*					
			Colorado Red	Dark True Blue	Frozen White**	Saffron Yellow	Tonic*	Moondust Silver*	Pepper Red*	Magnum Grey*	Sublime*	Blue Ambition*
Transit Chassis Cab	Tomy fabric	Lichen	●	●	●	●	●	●	●	●	●	●
	York Weave vinyl	Lichen	○	○	○	○	○	○	○	○	○	○
Transit Chassis Double Cab	Tomy fabric	Lichen	●	●	●	●	●	●	●	●	●	●
	York Weave vinyl	Lichen	○	○	○	○	○	○	○	○	○	○

● = Standard, ○ = Option, at extra cost. *Metallic paint is an option at extra cost. **The Ford Transit 'One-Stop' Box Van is only available in Frozen White.

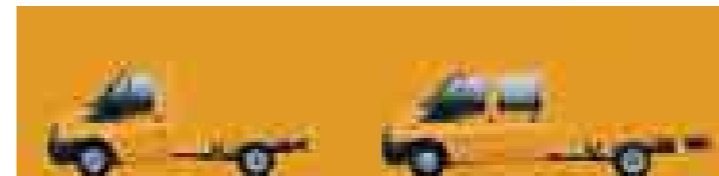
Solid colours



Colorado Red



Dark True Blue

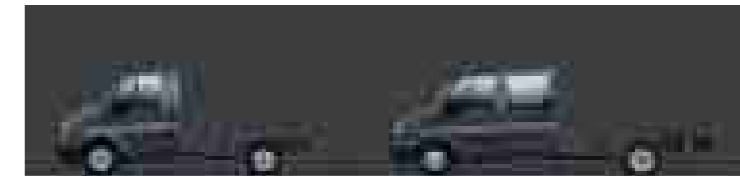


Saffron Yellow



Frozen White

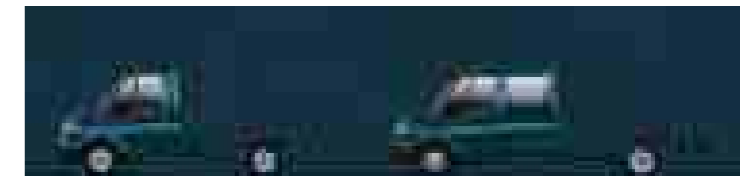
Metallic colours



Magnum Grey*



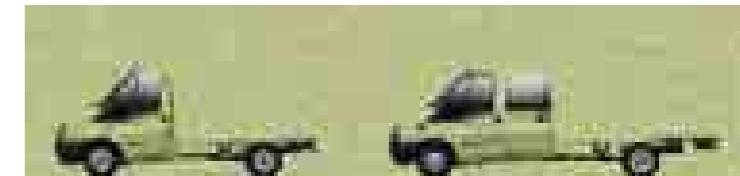
Moondust Silver*



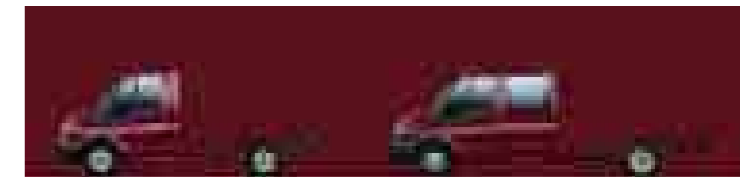
Blue Ambition*



Tonic*



Sublime*



Pepper Red*

Note The images used are to illustrate body colours only and may not reflect the vehicle described. Colours and trims reproduced within this brochure may vary from the actual colours, due to the limitations of the printing processes used.

*Metallic paint is an option, at extra cost.

Special Vehicle Options (SVO)

While the Ford Commercial Vehicle range already offers an extensive choice of off-the-shelf features and options, the Special Vehicle Options (SVO) programme goes a step further. With special options ranging from smaller items like a secondary heavy-duty battery, to something as complex as a platform lift, the SVO

team is here to help. So whether you want your next vehicle supplied in a special colour to match your company's livery, or need a dedicated conversion for specialist use, SVO has the flexibility and experience to provide a vehicle that is right for you.

For more information, please speak to your local Ford Transit Specialist Dealer.